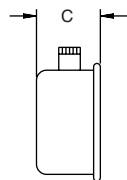
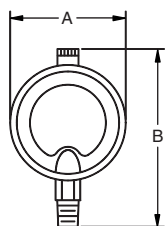
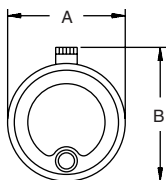


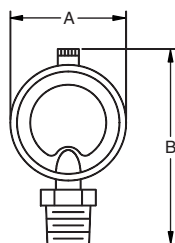
SV-12 Steam Radiator Air Vent



**SV-12 Angle
Air Vent**



**SV-12 Straight
Air Vent**



**SV-12 Straight
Main Air Vent**

For Steam Service

A vent port size for every room location with the largest size for the coldest rooms and the smallest size for the "too hot" rooms. SV-12 air vents are easy to install on any steam radiator.

For a fully detailed certified drawing, refer to CDY #1042.



Materials

Name of Part	Material
Body	Nickel plated brass
Float	Polypropylene
Valve Seat	Brass
Bimetal Thermostatic Element	Stainless steel

Physical Data

Pattern	Angle Connection		Straight Connection		Straight Main Connection	
	in	mm	in	mm	in	mm
Pipe Connection Size	1/8	3	1/8, 1/4	3, 6	1/2, 3/4	15, 20
"A"	2-3/16	56	2-3/16	56	2-3/16	56
"B"	2-5/16	59	3-1/4	83	3-1/2	89
"C"	1-3/16	30	1-3/16	30	1-3/16	30
Max. Operating Pressure, psi (bar)	15 (1)					
Vent Port Designation and Port Size	4 = .040" 6 = .0935" 5 = .070" C = .1285" D = .1850" Each air vent is provided with all five of the above vent ports				1 = .1850" Only one vent port will be provided	